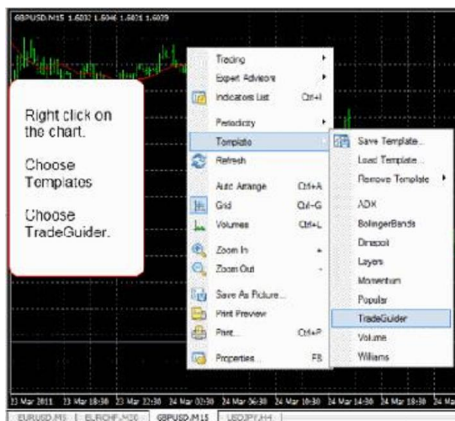


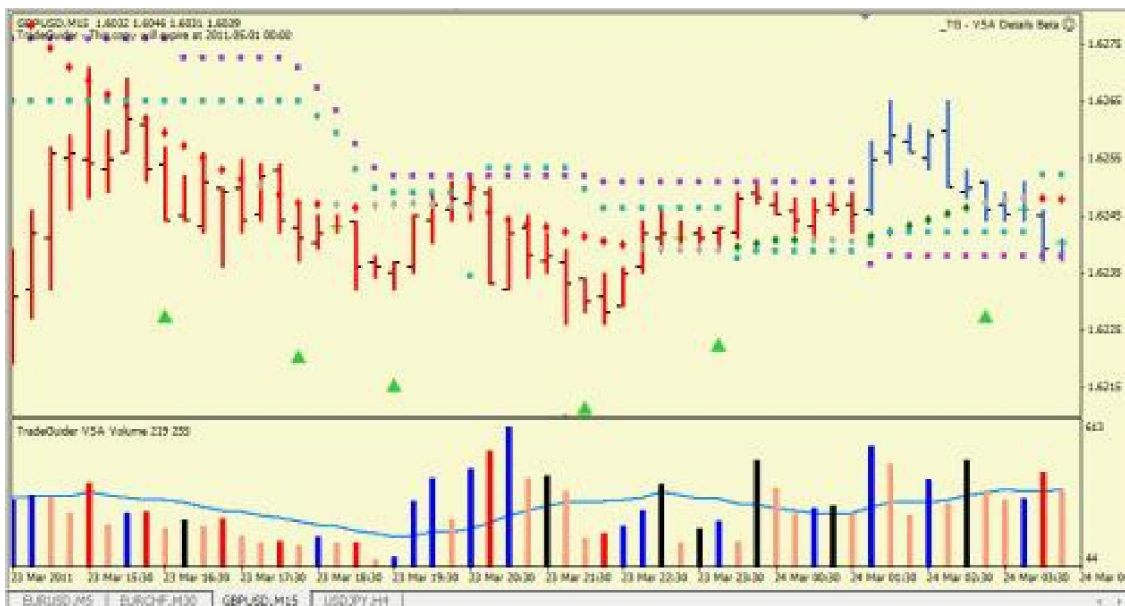
# TradeGuider VSA Plug-in for MT4.

Adding the TradeGuider Template to your charts.

1. Right mouse click on a chart.
2. Choose **Template**.
3. Choose **TradeGuider** from the list.



That will add all of the default TradeGuider VSA studies to your charts.



# TRADING SOFTWARE

***FOR SALE & EXCHANGE***

**[www.trading-software-collection.com](http://www.trading-software-collection.com)**

**Subscribe for FREE download 5000+ trading books.**

## **Mirrors:**

**[www.forex-warez.com](http://www.forex-warez.com)**  
**[www.traders-software.com](http://www.traders-software.com)**

## **Contacts**

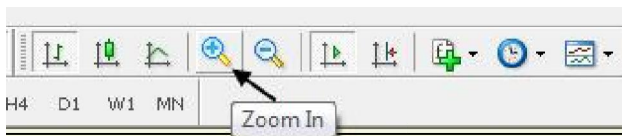
**[andreybbrv@gmail.com](mailto:andreybbrv@gmail.com)**  
**[andreybbrv@hotmail.com](mailto:andreybbrv@hotmail.com)**  
**[andreybbrv@yandex.ru](mailto:andreybbrv@yandex.ru)**

**Skype: andreybbrv**

**ICQ: 70966433**

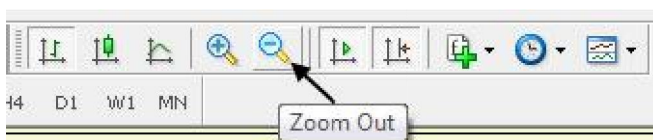
## Chart zoom level.

To zoom in on your charts click the magnifying glass + (plus) button on your toolbar.



You can also use the + (plus) key on your keyboard or right click on your chart and choose "Zoom In".

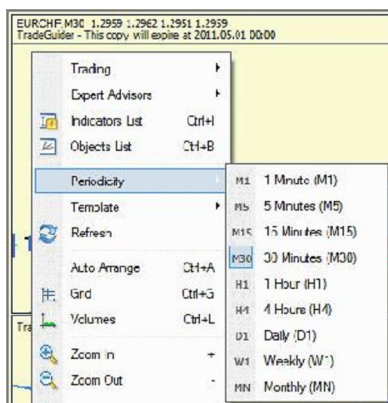
To zoom out click the magnifying glass - (minus) button on your toolbar.



You can also use the - (minus) key on your keyboard or right click on your chart and choose "Zoom Out".

## Changing the time period of a chart.

1. Right mouse click on the chart.
2. Choose Periodicity.
3. Choose the time you want to change to.



Alternately you can choose a time period from the *Periodicity* toolbar. There are 9 different buttons on the toolbar.

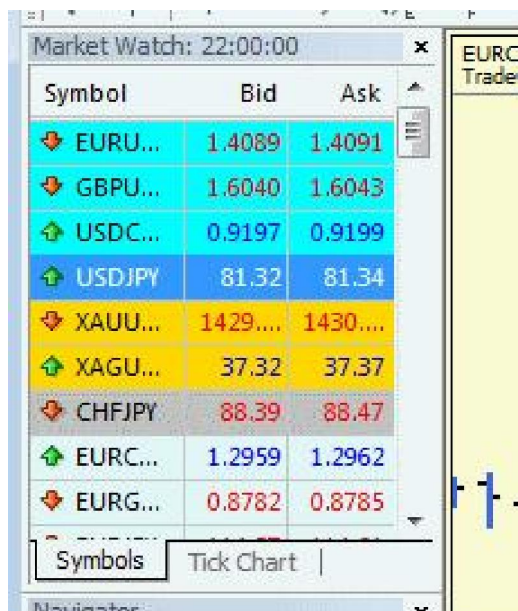


- M1 - 1 minute.
- M5 - 5 minute.
- M15 - 15 minute.
- M30 - 30 minute.
- H1 - 1 hour.
- H4 - 4 hour.
- D1 - Daily.
- W1 - Weekly.
- MN - Monthly.

The current time period the chart is in will be selected. Click on a different time to change your chart. In the example toolbar image above the M30 is selected which is the 30 minute time period.

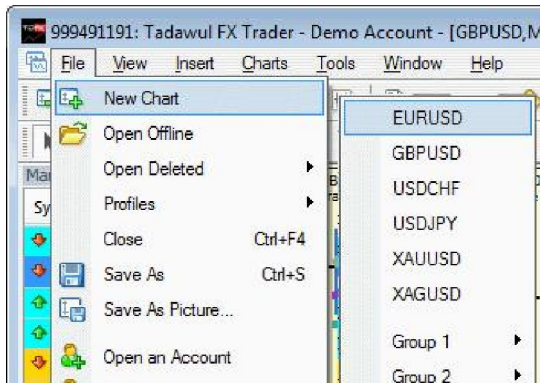
### Changing chart symbols.

It is very easy to change the chart symbol in MT4. Click on the symbol you want from the list to the left of the chart and drag it to the charts.



## Adding additional charts to MT4.

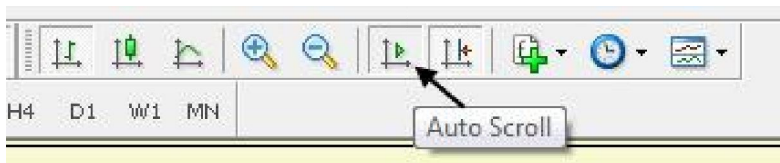
1. Click File on the menu.
2. Choose New Chart.
3. Choose a Symbol or Symbol Group.



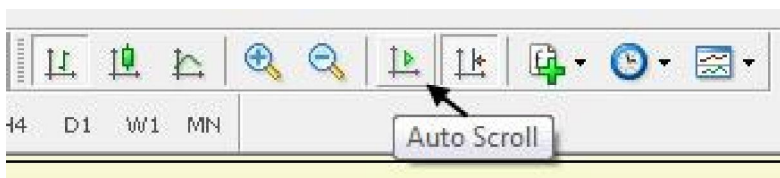
## Auto scroll charts in MT4.

The MT4 software is setup to auto scroll to the live bar to the far right of the chart by default. This enables you to see the live bar as data comes in for each tick. To disable the auto scroll and view historical data click the "Auto Scroll" button on the toolbar.

When the button is depressed (down) auto scroll is enabled.



When the button is flat auto scroll is disabled.



# TradeGuider VSA Indicators.

The VSA indicators.

The TradeGuider VSA indicators constantly analyze your charts for imbalances of supply and demand. Once an imbalance is found, a red or green indicator is displayed alerting you to the likely strength or weakness in the market.

The TradeGuider VSA Plug-in is armed with hundreds of these supply and demand indicators. The green up arrows indicate strength or demand in the market and are referred to as SoS or sign of strength indicators. The red down arrows indicate weakness or supply in the market and are often referred to as SoW or sign of weakness indicators.

There is another type of VSA indicator, the confirm analysis indicator. This indicator is displayed by a yellow square on your chart for some of the SoS and SoW VSA indicators that require two bars for analysis. This indicator is displayed by a yellow square on your chart.



When a bar closes and it is analyzed and there is potential for a red or green VSA indicator arrow, a yellow square will be added to that bar. It will then wait for the live bar to close before completing the analysis.

If after the live bar closes and the analysis is confirmed, the red or green VSA indicator arrow will be added to the bar with the yellow confirmation indicator square.



If after the live bar closes and the analysis is not confirmed no red or green VSA indicator will be added to the bar with the yellow confirmation indicator square. Only the yellow square will remain on the charts.

## Short Term Trend Changes - The Diamonds.

If you're an active trader, you will find the diamonds particularly useful as a simple and quick visual guide as to whether the trend is up (green), down (red), or about to change (gray).

The diamonds are an attempt to normalize and smooth the price action. Whatever your trading style, diamonds are flexible indicators that can be set up to aid you in scalping or swing trading on intraday charts, position trading on daily charts and in medium/long term investing on weekly or monthly charts.

Apart from the changing color of the diamonds, one of the great things about this indicator is the way it levels out as prices become slow to progress. If prices suddenly surge forward this indicator will also accelerate upwards, or downwards, smoothing out the fluctuations caused by minor corrections or reactions.

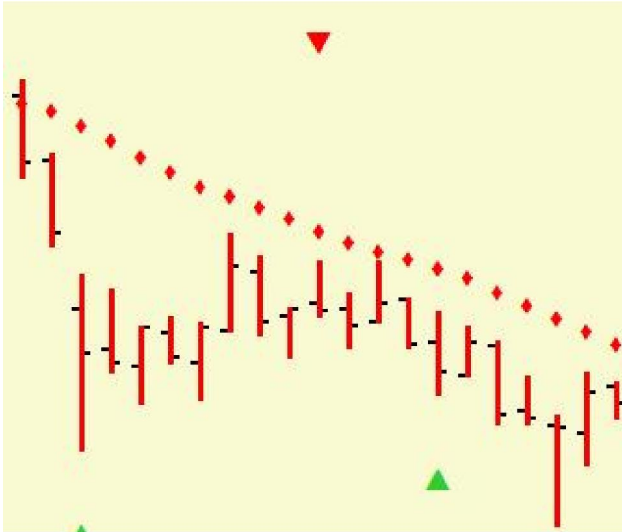
## Interpreting Trend Status Using the Diamonds.

When attempting to trade with the trend, one question that has always posed a problem is, "how do I know when a trend is in progress?" And similarly, "how do I know when a trend has reversed?" The diamond indicators can be used in a definitive and objective way to answer these questions, helping you trade in a more informed, and less emotional, way.

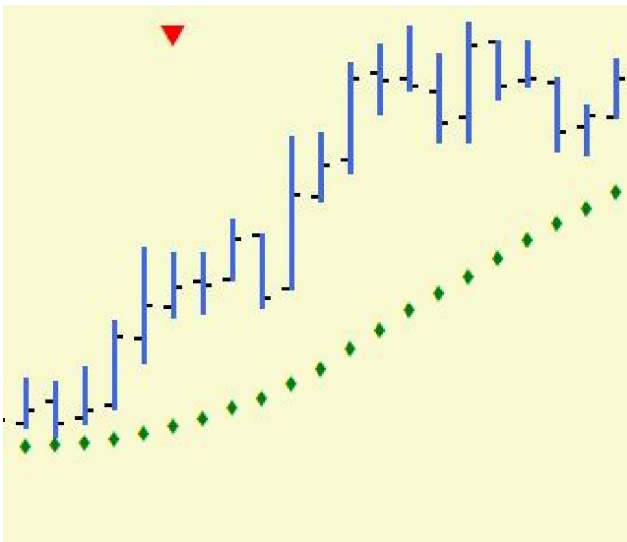


## Trend in Progress.

A downward trending market is characterized by red diamonds, falling diamonds, closing price below the diamonds.



An upward trending market is characterized by green diamonds, rising diamonds, closing price above the diamonds.



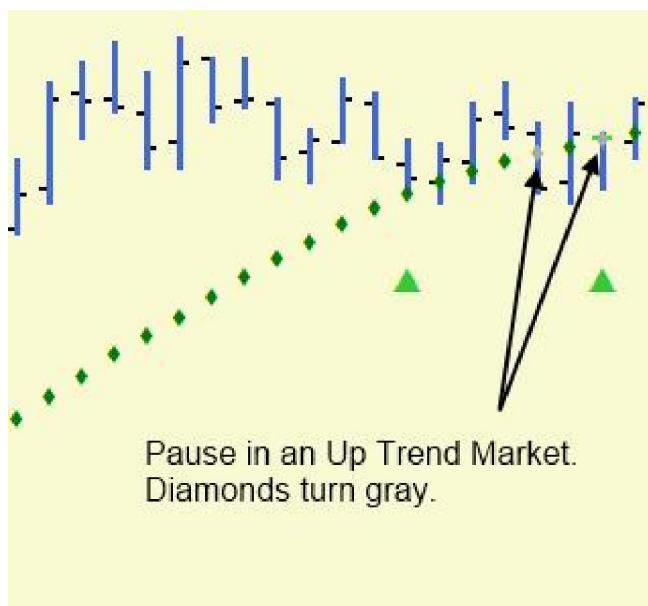
## Changing Trend - Gray Diamonds.

When the short-term trending system detects congestion, or a change, in trend, the diamonds change color to a neutral gray.

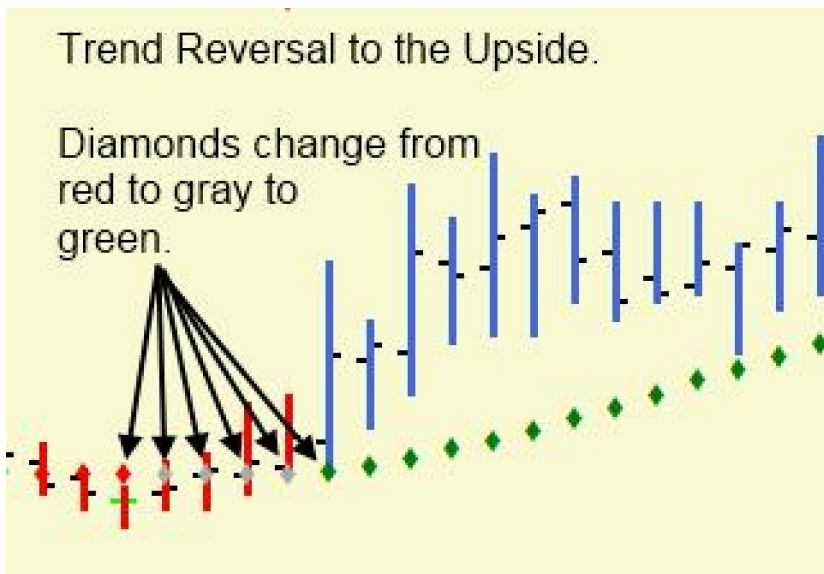
Pause in a down trending market. The diamonds change from red to gray, then back to red.



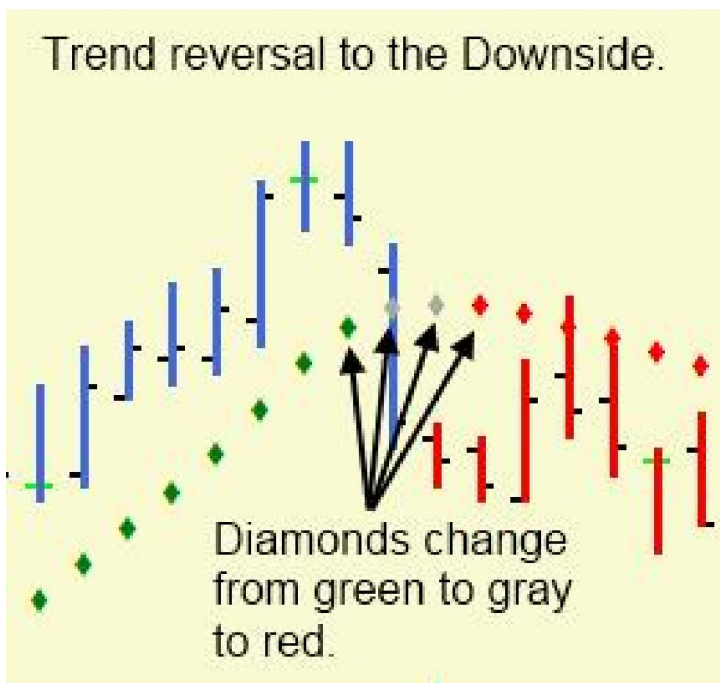
Pause in an up trending market. The diamonds change from green to gray, then back to green.



Trend reversal to the upside. The diamonds change from red to gray to green.

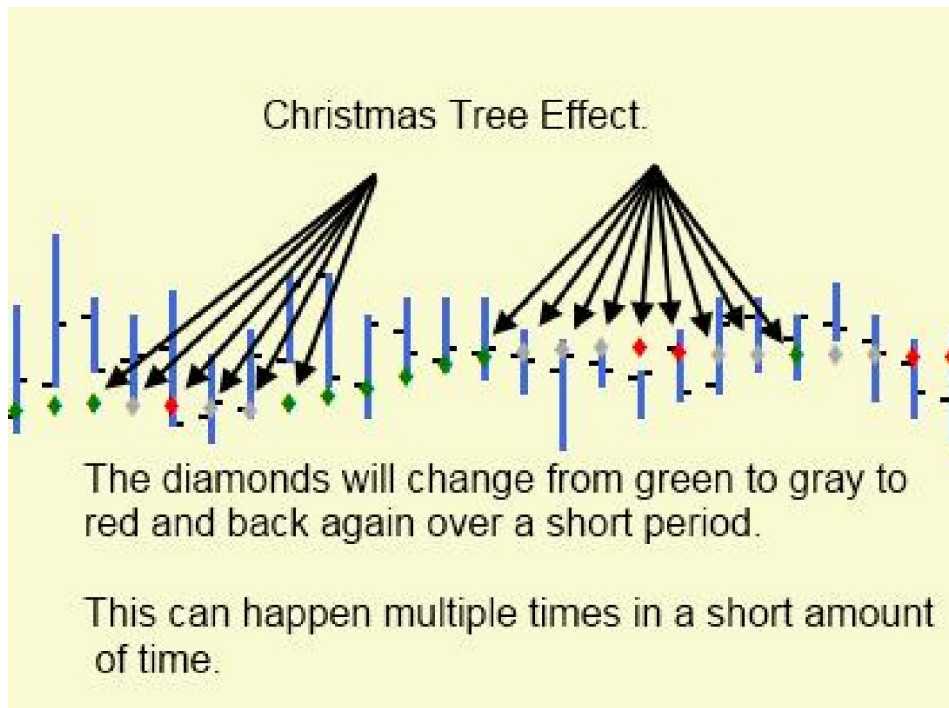


Trend reversal to the downside. The diamonds change from green to gray to red.



If you see what we call the Christmas Tree Effect, this means the market is going into congestion and trading will be volatile and choppy.

In the Christmas Tree Effect you'll see that after a green or red diamond a gray diamond, or maybe two, followed by more red or green diamonds. This can happen over 5-10 bars, or sometimes over 100 bars.



Taking an Overall View with The Diamonds.

You can see how this indicator can help you recognize when a trend is changing from one direction to another. Moreover, you can also see how the colors tend to lock onto the trend and absorb minor adverse moves that are against the trend.

# Medium-Term Trend Changes – Bar Coloring.

There is a second trending system in TradeGuider VSA that's designed to be a lot more insensitive to minor trend changes.

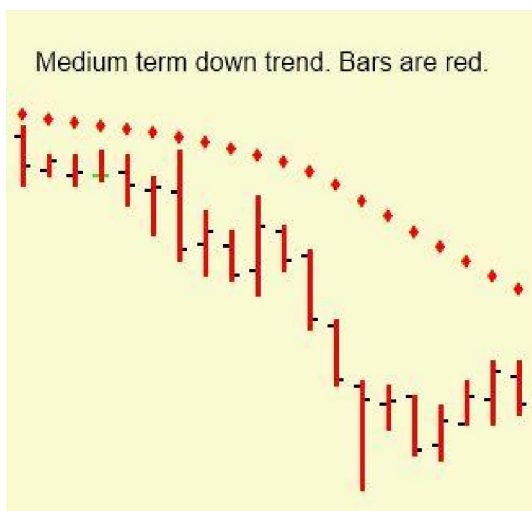
It's a volatility-driven system which takes into account how much a market moves. The more a market moves, the more forgiving the system becomes to adverse price excursions against the trend. However, if a market isn't that volatile, the trending system becomes more responsive to movement. Blue price bars signify a medium-term up trend and red price bars signify a medium term down trend.

This type of trending system is more forgiving with regards to adverse moves, or a temporary slowing of price momentum (unlike trending systems that are based on moving averages).

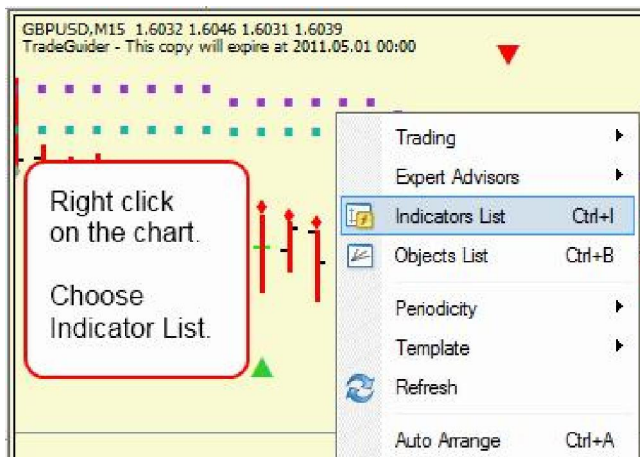
Up trends in the medium term are indicated by blue colored bars.



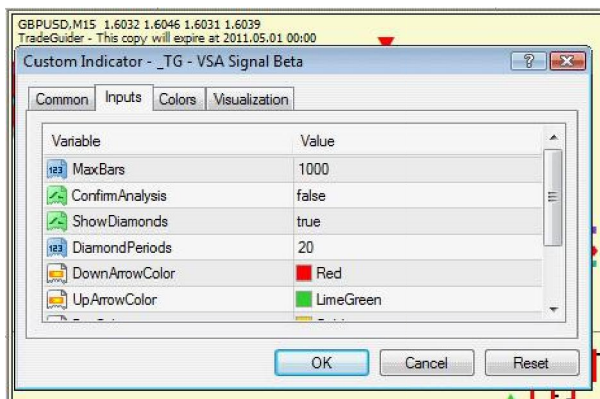
Down trends in the medium term are indicated by red bars.



## To view/change the VSA indicator settings:



1. Right click on the chart.
2. Choose **Indicators List**.
3. Choose the **\_TG - VSA Signal**.
4. Click the **Edit** button.
5. Choose the **Input** tab.



Here is the list of options for the VSA indicators and the default settings when choosing the **Input** tab.

**MaxBars** - *1000* - The maximum number of bars analyzed.

**ConfirmAnalysis** - *false* - This is the setting for the confirmation analysis indicator which is displayed as a gold colored box.

**ShowDiamonds** - *true* - Displays the Diamonds or Short Term Trend indicators.

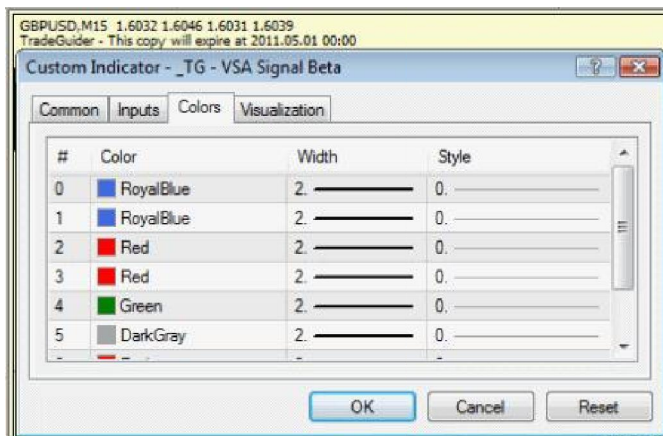
**DiamondPeriods** - *20* - The diamond period analysis.

**DownArrowColor** - *Red* - Color of the VSA SoW (Sign of Weakness) indicator arrows.

**UpArrowColor** - *LimeGreen* - Color of the VSA SoS (Sign of Strenght) indicator arrows.

**BoxColor** - *Gold* - Color of the VSA Confirmation indicators squares.

There are additional color settings you can change by clicking the **Colors** tab.



**Color 0** - *RoyalBlue* - Up trend bar color.

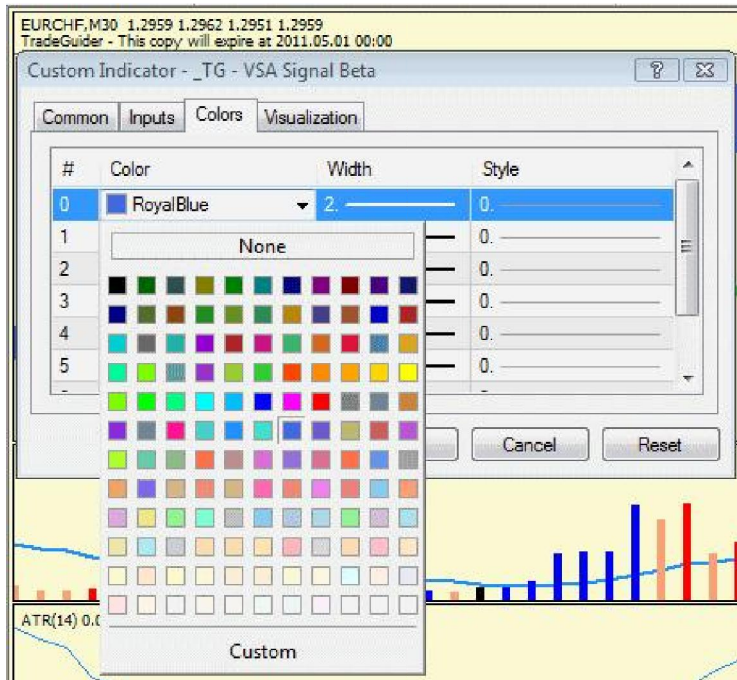
**Color 2** - *Red* - Down trend bar color.

**Color 4** - *Green* - Up trend diamond color.

**Color 5** - *DarkGray* - Neutral trend diamond color.

**Color 6** - *Red* - Down trend diamond color.

To Change any of the colors double click on the color and then click on the down arrow to open the color selection window.



Select the new color and then click on another color to select or double click on another color to change that one.

The TradeGuider VSA Stops.

Once you've decided to pull the trigger to enter a trade, you'll need to manage your position to earn the maximum amount of profit. The VSA Vol Stops also known as the "H Stops" that you may read about in the "Master the Markets" book or hear of in some of the seminars, will help you to do just that.

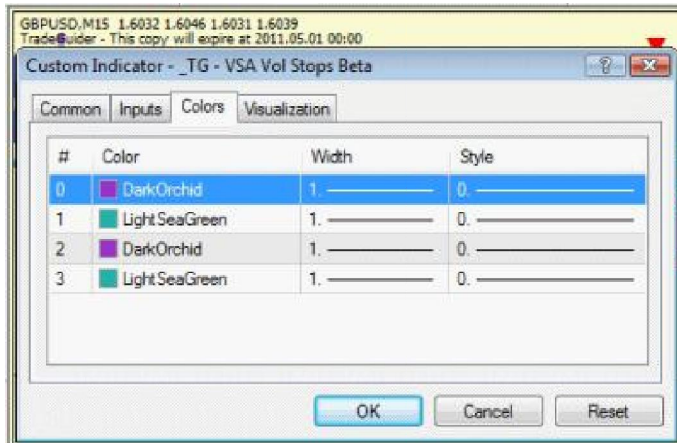


Here are some interesting facts about the VSA Vol Stops.

- The stops above the red diamonds shows a short position should be in place, or if you are long, exercise caution with your trade, or move your stop to protect your trade.
- The stops below the green diamonds shows a long position should be in place, or if you are short, exercise caution with your trade, or move your stop to protect your trade.
- Stop management is an individual choice but, if used correctly, the stop management tool will guide you to protecting a good trade and staying with the trade, and cutting a trade (or getting stopped out) if the market turns. Used with the trending system it gives you the confidence and information to manage your position or positions.
- It is volatility-based, meaning that it adjusts quickly to price moves and is more sensitive in calmer markets
- The stop is actually a pair of stops comprised of a near and far stop.
  - The near stop can be used by more cautious traders to get out early, while the far stop can be used by traders who don't mind risking the possibility of being taking out with a bigger loss, but with the potential for a far larger return.
- Stops can separate, so that one of the stops sits above the bar, while the remaining stop sits below the bar.
  - This is useful for marking off potential areas of congestion. In these circumstances you watch the trade extra close.
- When both stops switch from being below the bar, to above the bar, this can be seen as a potential short position.
- Similarly, when both stops switch from being above the bar, to below the bar, this can be seen as a potential long position.
- The stops operate on a ratchet so they will move in the direction of your trade and then stick at a certain level to lock in profit and protect your exposure.
- The stops are always "*in the market*" and can be used as a basis for a trading set-up.

## Changing the VSA Vol Stop colors:

1. Right click on the chart.
2. Choose **Indicator List**.
3. Choose **\_TG - VSA Vol Stops**.
4. Choose the **Colors** tab.



**Color 2** - *DarkOrchid* - Far stop.

**Color 3** - *LightSeaGreen* - Near stop.

Removing the VSA Stops indicator from your charts.

1. Right click on a chart.
2. Choose **Indicator List**.
3. Choose **\_TG – VSA Vol Stops**.
4. Click the **Delete** button.

Adding the VSA Stops indicator back to a chart after you have removed them.

On the left of the charting area below the list of symbols is the navigator. If the navigator is not open click View on the menu and then choose Navigator.



1. Select Custom Indicators from the Navigator.
2. Click on the + button next to Custom Indicators to expand the list.

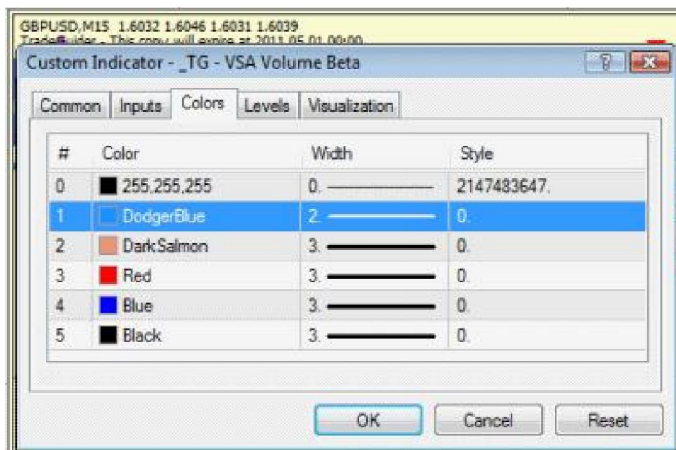


3. Left click the *\_TG – VSA Vol Stops* in the navigator.
4. Drag it to your chart.

That will add the VSA Stops back to your chart.

## The VSA Volume bars.

Changing the VSA Volume bar colors and color settings description.



- Color 1** - *DodgerBlue* - Average volume line.
- Color 2** - *DarkSalmon* - Volume lower than previous two volume bars.
- Color 3** - *Red* - Price bar closed lower than previous price bar.
- Color 4** - *Blue* - Price bar closed higher than previous price bar.
- Color 5** - *Black* - Price bar closed equal to previous price bar.

# TRADING SOFTWARE

***FOR SALE & EXCHANGE***

**[www.trading-software-collection.com](http://www.trading-software-collection.com)**

**Subscribe for FREE download 5000+ trading books.**

## **Mirrors:**

**[www.forex-warez.com](http://www.forex-warez.com)**  
**[www.traders-software.com](http://www.traders-software.com)**

## **Contacts**

**[andreybbrv@gmail.com](mailto:andreybbrv@gmail.com)**  
**[andreybbrv@hotmail.com](mailto:andreybbrv@hotmail.com)**  
**[andreybbrv@yandex.ru](mailto:andreybbrv@yandex.ru)**

**Skype: andreybbrv**

**ICQ: 70966433**

Removing the VSA Stops indicator from your charts.

5. Right click on a chart.
6. Choose **Indicator List**.
7. Choose **\_TG – VSA Volume**.
8. Click the **Delete** button.

Adding the VSA Stops indicator back to a chart after you have removed them.

On the left of the charting area below the list of symbols is the navigator. If the navigator is not open click View on the menu and then choose Navigator.



1. Select Custom Indicators from the Navigator.
2. Click on the + button next to Custom Indicators to expand the list.



3. Left click the **\_TG – VSA Volume** in the navigator.
4. Drag it to your chart.

That will add the **VSA Volume** to your chart if you have removed it.

This concludes the user guide. If you need any additional information regarding the general use of the MT4 software click Help on the menu and choose Help Topics.

There is also a video walk through of the MT4 trading platform available. This is a general video walk through and is not specific to the TradeGuider VSA Plug-in or our Volume Spread Analysis methodology. It is only intended to help you become more familiar with the MT4 trading platform.

<http://forexforums.dailyfx.com/faqs-video-tutorials/80723-fxcm-uk-mt4-video-walkthrough.html>

**WWW.FOREX-WAREZ.COM**  
**ANDREYBBRY@GMAIL.COM SKYPE: ANDREYBBRY**